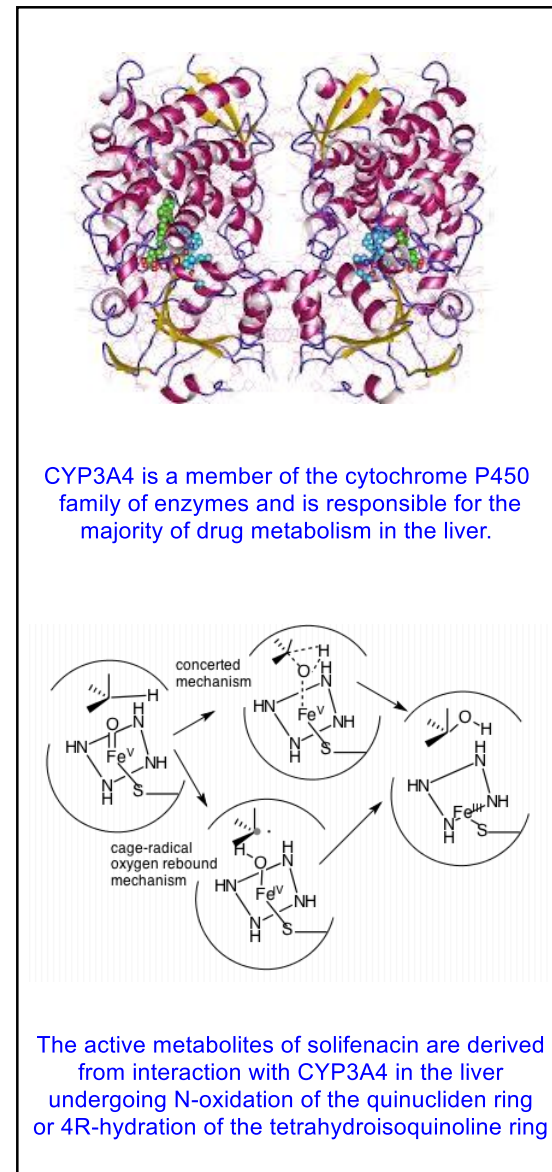
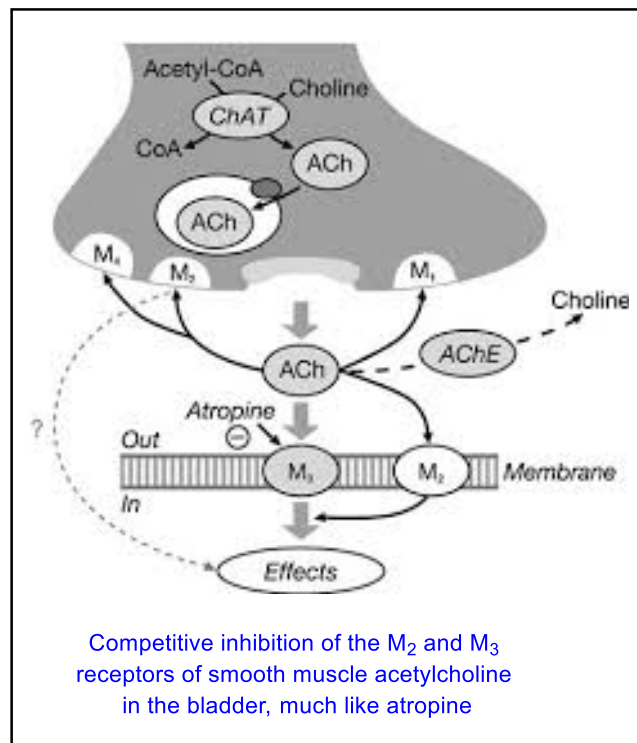
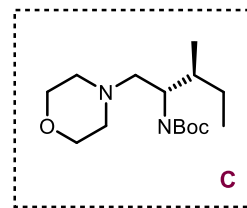
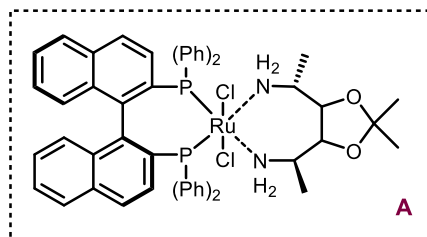
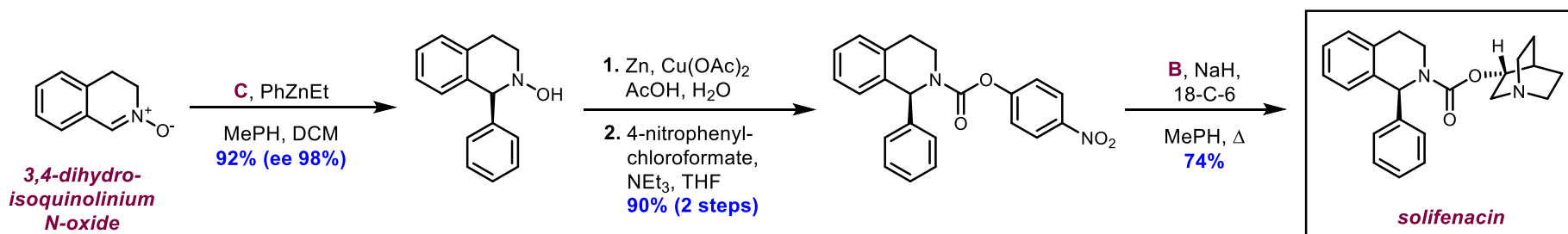
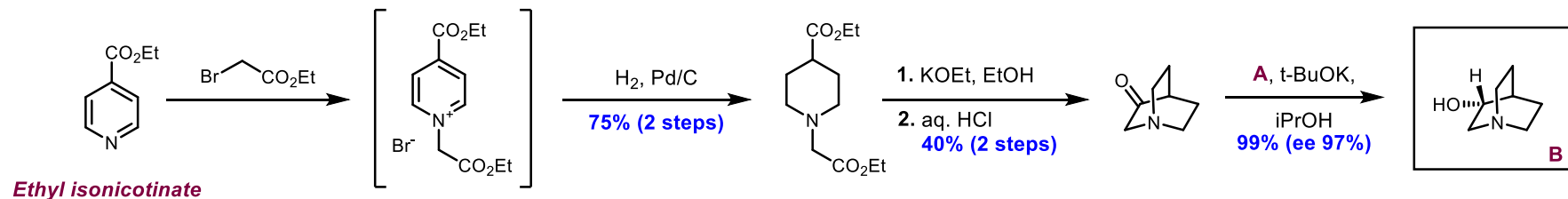


- Solifenacin is an anticholinergic agent responsible for reduction of bladder smooth muscle contractibility,
- Mediates physiological effect of the parasympathetic nervous system
- Made to resemble ammonium substructure of muscarine when protonated
- Oral bioavailability of 90%
- C_{max} at 2-8 hours of 32.3 - 62.9 ng/mL with a plasma half life of 40-68 h
- 98% of drug bound to human plasma proteins, most notably, α₁-acid glycoproteins
- Approved by FDA in November 2004



J. Med. Chem. **2005**, 48, 6597-6606.
Org. Lett. **2010**, 12, 2690-2693.
Proc (Bayl Univ Med Cent) **2007**, 20, 307-314.
Regulatory Toxicology and Pharmacology **2013**, 67, 226-231227
 Patents: 218633-VES & US20090203915A1

Discovery Route:



Process Route:

