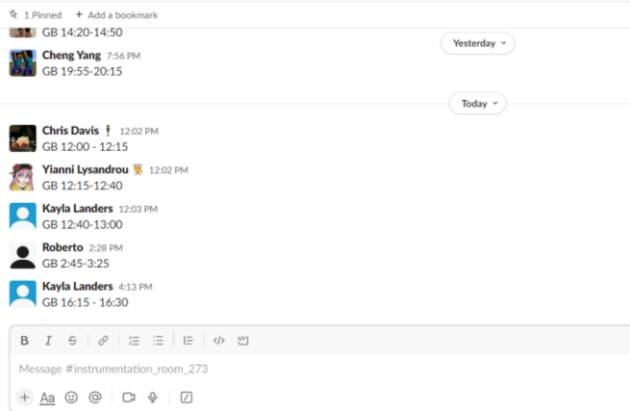


Using the glove box

#instrumentation_room_273



Step 1
Reserve your time for the glove box in slack



Step 2
Get any vials or spatulas you will need and put them in a tray



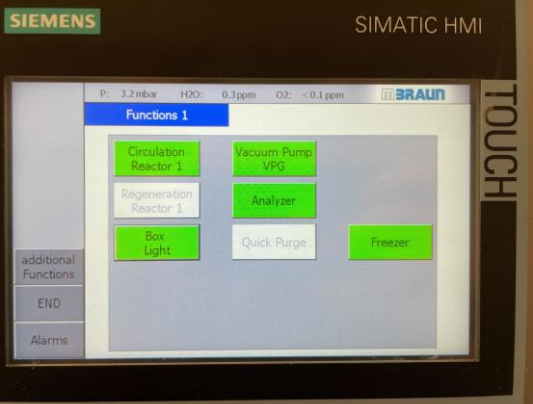
Step 3
Put on glove box sleeves and a new pair of gloves

Remove any rings, watches, or jewelry

Step 4
Check the H₂O and O₂ levels

Initials	Time	H ₂ O (ppm)	O ₂ (ppm)
JZ	16:10-16:50	0.6/0.1	0.0/0.1
SLB	20:20-20:25	0.6/0.1	0.0/0.1
9/12 DR	23:00-23:20	0.6/0.1	0.0/0.1
DR	1:45-10:00	0.6/0.1	0.0/0.1
14:50-15:05		0.6/0.1	0.0/0.1
SLB KDL	0:45	0.3/0.1	0.0/0.1
SF	20:20-20:35	23/0.1	0.0/0.1
9/14 KDL	13:55-13:45	0.3/0.1	0.0/0.1
9/14 DL	14:22-14:44	0.3/0.1	0.0/0.1
9/15 LWS	12:00-12:05	0.3/0.1	0.0/0.1
YL	12:15-	0.3/0.1	0.0/0.1

Step 5
In the GB log write your initials, the time you enter, and The H₂O and O₂ level



Step 6
The vacuum chamber is currently under vacuum. Fill with N₂ (turn nob to the right). Then set to closed (upright position).



Step 7
Now you can put your tray in the glove box chamber. Cycle between vacuum and N₂ three times (one minute under vacuum each time)





Step 8
Close the chamber, and cycle between vacuum and N₂ three times (one minute under vacuum each time). After your final time on N₂ Switched to the closed position so the chamber can be opened inside the GB.



Step 9
Put one glove on one at a time



Step 10
After your first hand is in, you can work your second hand in. Now adjust the gloves so they fit



Step 11
Put a latex glove on each hand in the GB.
Now you can bring in your materials and get to work!



Step 12
After you finish working vacuum around the balance to keep the GB clean!
Place your vials back in the tray, and place in the vacuum chamber.
After you remove your tray switch the chamber back to vacuum.

Y Z	15:37-16:04	0.6/0.1-0.6/0.1
WD	16:10-16:30	0.6/0.1-0.6/0.1
JZ	20:00-20:35	0.6/0.1-0.6/0.1
SLB	23:00-23:20	0.6/0.1-0.6/0.1
9/12 DP	7:45-10:01	0.6/0.1-0.6/0.1
DR	14:30-15:05	0.6/0.1-0.6/0.1
SLB KDL	0:45	0.3/0.1-0.3/0.1
SF	20:20-20:35	0.3/0.1-0.3/0.1
9/14 KDL	13:35-13:45	0.3/0.1-0.3/0.1
9/14 DL	14:22-14:44	0.3/0.1-0.3/0.1
9/15 WD	12:00-12:08 20	0.3/0.1-0.3/0.1
YL	12:15-12:23	0.3/0.1-0.3/0.1

Step 13
Don't forget to fill out the log before you leave.