

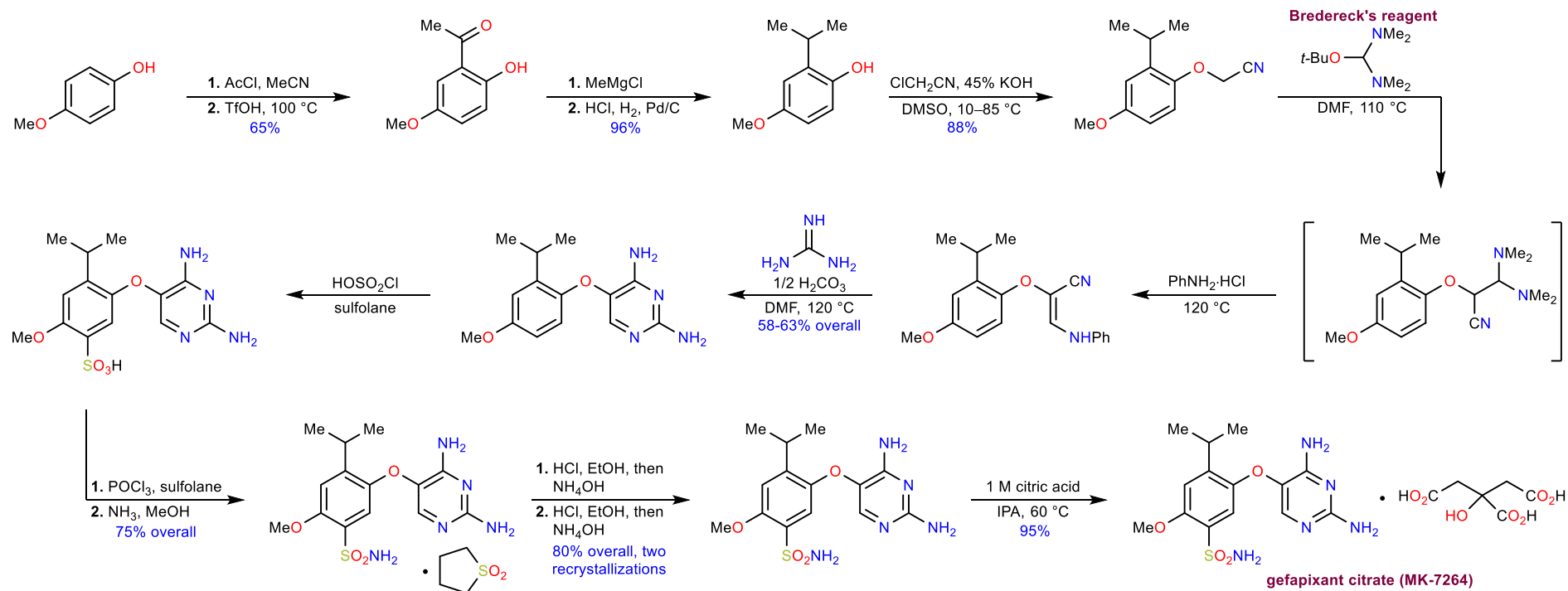
- Gefapixant citrate is an antagonist of the purinergic receptor P2X3 and has shown great promise in Phase 3 clinical trials for the treatment of chronic cough.
- Chronic cough is defined as cough lasting longer than 8 weeks. Most common causes are: asthma, bronchitis, allergies and GERD.
- About 10% of adults have chronic cough, more commonly in industrialized countries. It can lead to complications like sleep disruption, headache, vomiting, urinary incontinence, fractured ribs etc.
- There are currently no approved treatments for chronic cough.



Ren, H., Maloney, K. M. Org. Process Res. Dev. **2020**, <https://pubs.acs.org/doi/10.1021/acs.oprd.0c00248>

Peng, F. Org. Process Res. Dev. **2020**, <https://doi.org/10.1021/acs.oprd.0c00241>

Supply Process: 11 steps, 16% overall yield



Commercial Manufacturing Process: 6 steps, 60% overall yield

