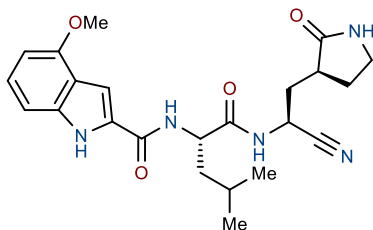
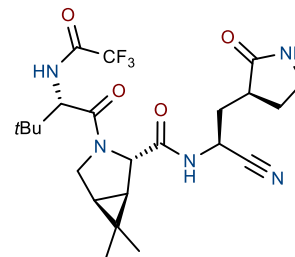
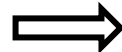


Active against SARS-CoV-1



Initial SARS-CoV-1 Hit

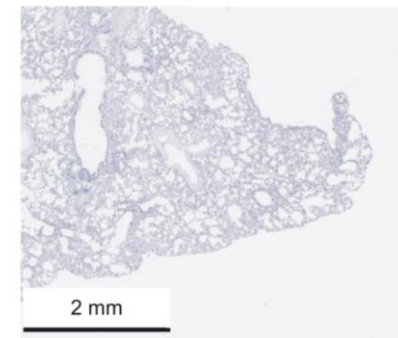
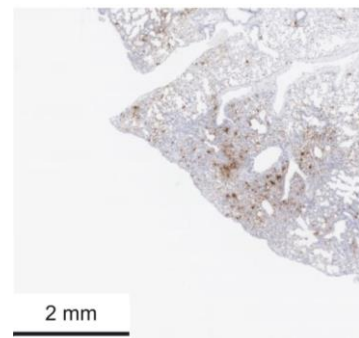


Orally bioavailable SARS-CoV-2 therapeutic

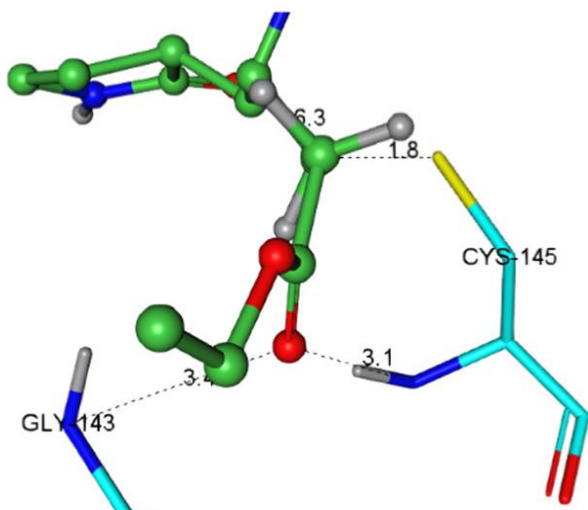


### Mode of Action:

- Coronaviruses synthesize two overlapping polyproteins that post-translationally cleaved at specific sites by 3C-like cysteine protease
- Co-crystals of diketones and alpha-hydroxy ketones with the SARS-CoV-1 3CLpro enzyme demonstrate irreversible covalent binding to a cysteine residue in the active site.
- CoV-1 and CoV-2 have 100% identical 3CLpro active sites



SARS-CoV-2 nucleocapsid protein in mouse lung tissue treated with 0 mg/kg (left) and 1000 mg/kg (right) of Paxlovid



Human antiviral target coverage over 12 hours with Paxlovid and ritonavir

