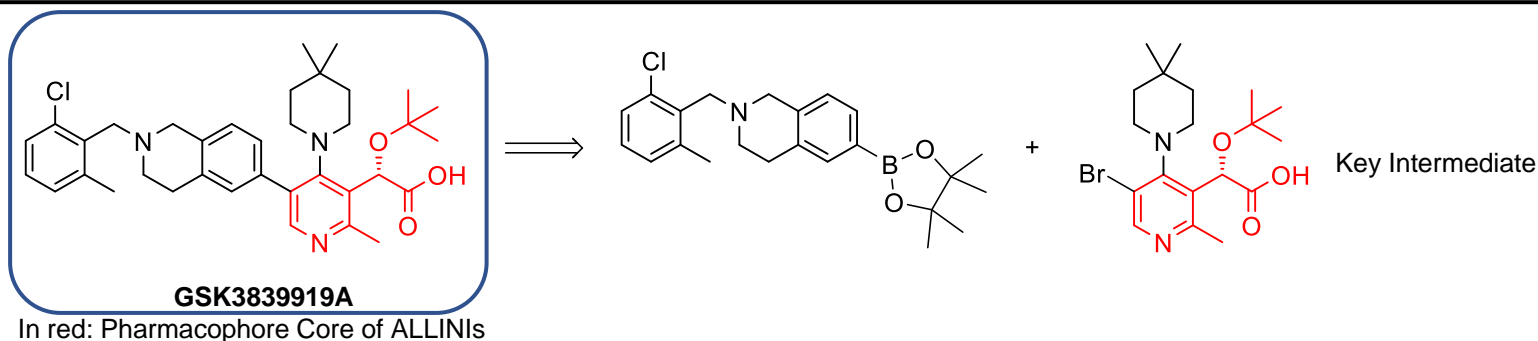
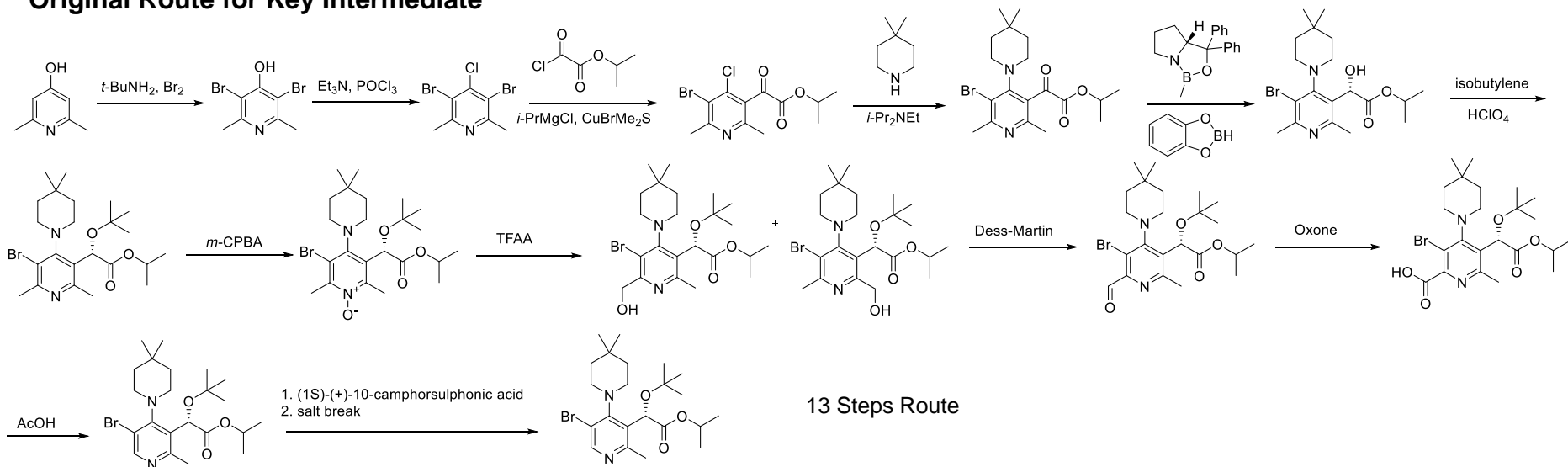


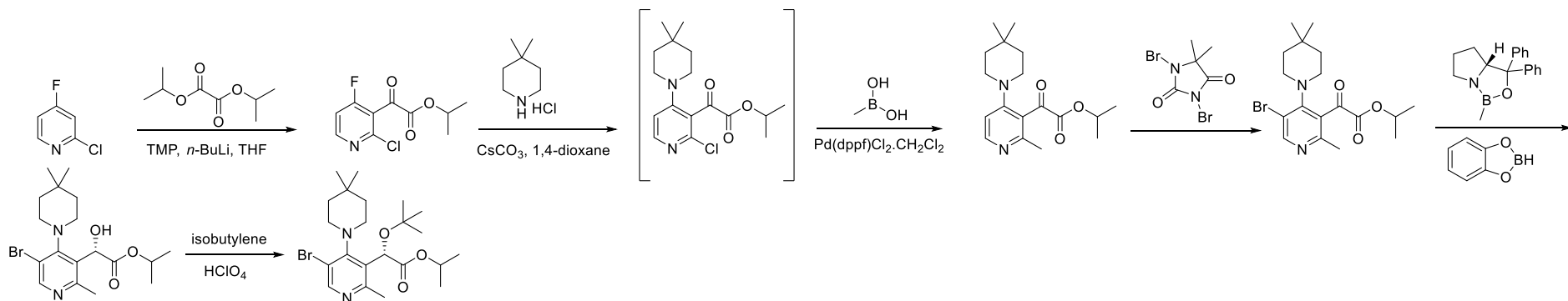
- Integrase is a key enzyme in HIV metabolism
- Several inhibitors become FDA-approved recently
- Allosteric Integrase Inhibitors (ALLINIs) represent a new class of antiretroviral compounds



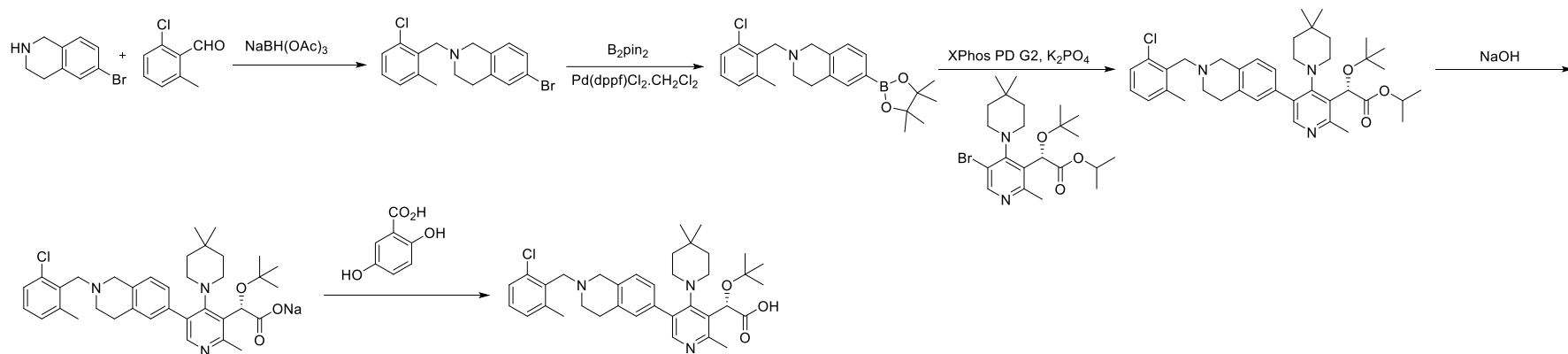
## Original Route for Key Intermediate



## New Route for Key Intermediate



## Original Synthesis of GSK3839919A



## Scalable Synthesis of GSK3839919A

