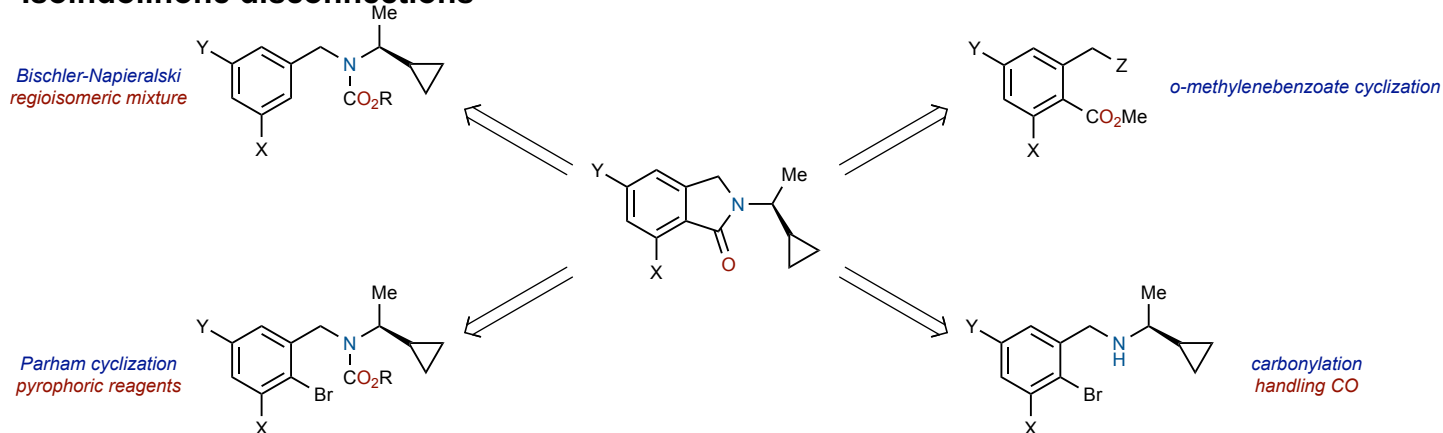
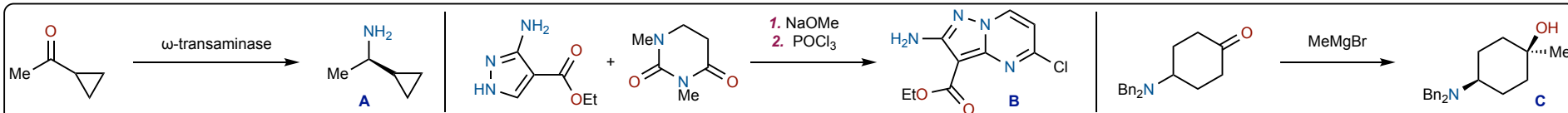
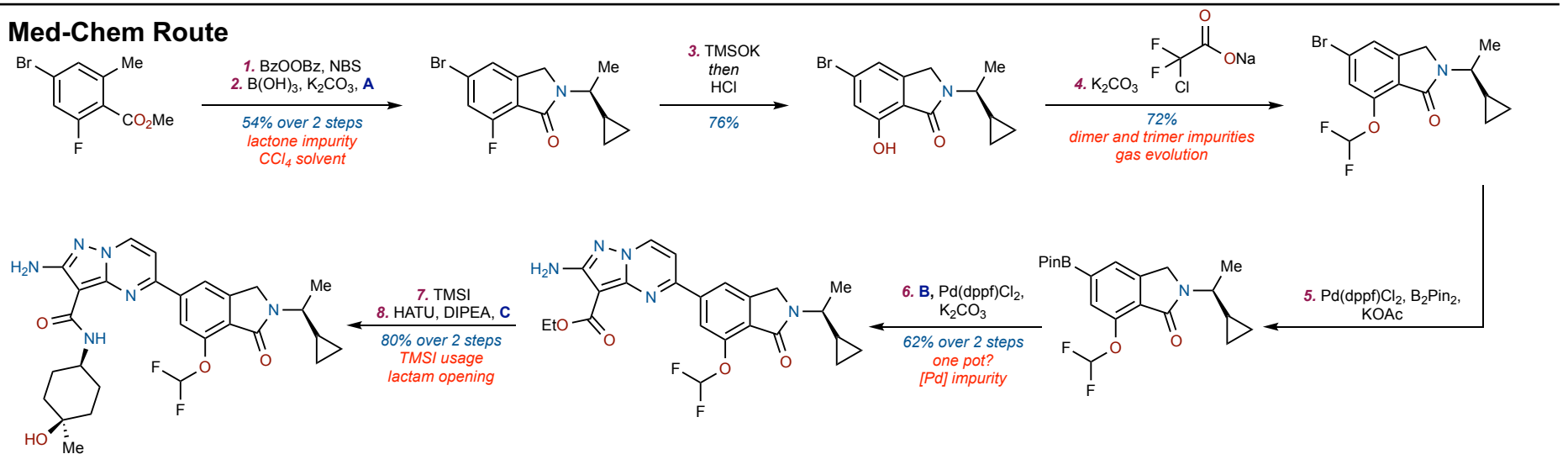


Lead compound displayed > 5,000-fold selectivity for PIK3 $\gamma$ , excellent *in vitro* activity, and favorable drug metabolism and pharmacokinetic properties  
Scalable route to the API was required for further testing (*in vivo* activity, safety and toxicology, solid form analysis)

## Isoindolinone disconnections

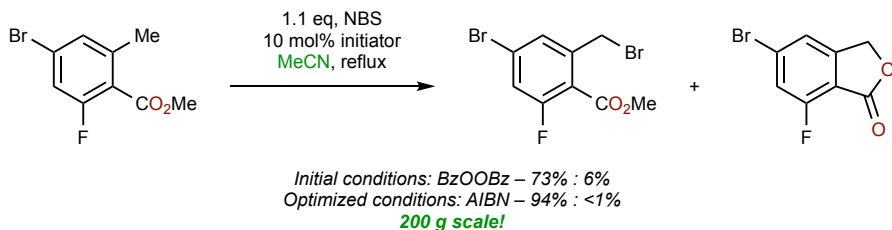


## Med-Chem Route

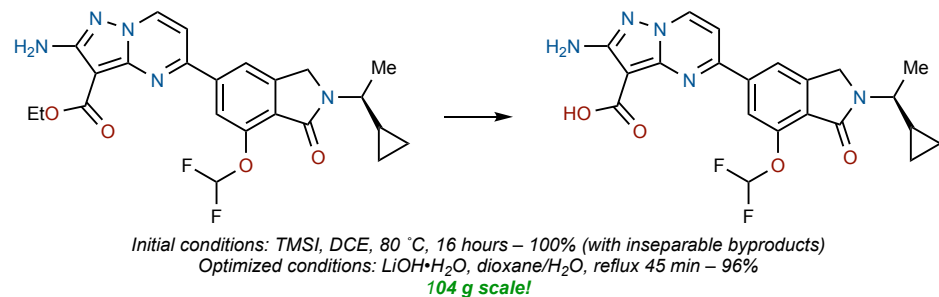


## Route Optimizations (200 g API):

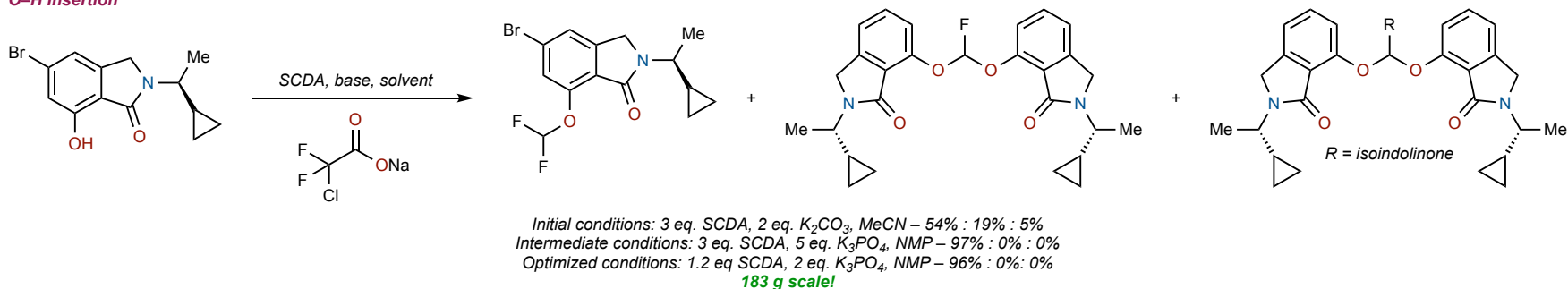
### Benzylic bromination



### Ester hydrolysis



### O–H Insertion



### Miyaura Borylation & Suzuki Coupling

