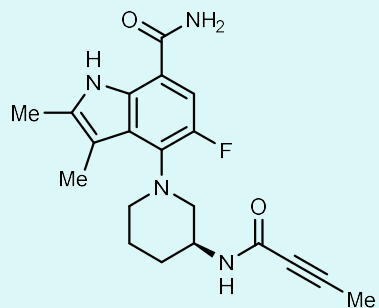




- Bruton's tyrosine kinase (BTK) inhibitor
 - Covalent, irreversible inhibitor
- Currently in Phase II clinical trials for Sjogren's syndrome

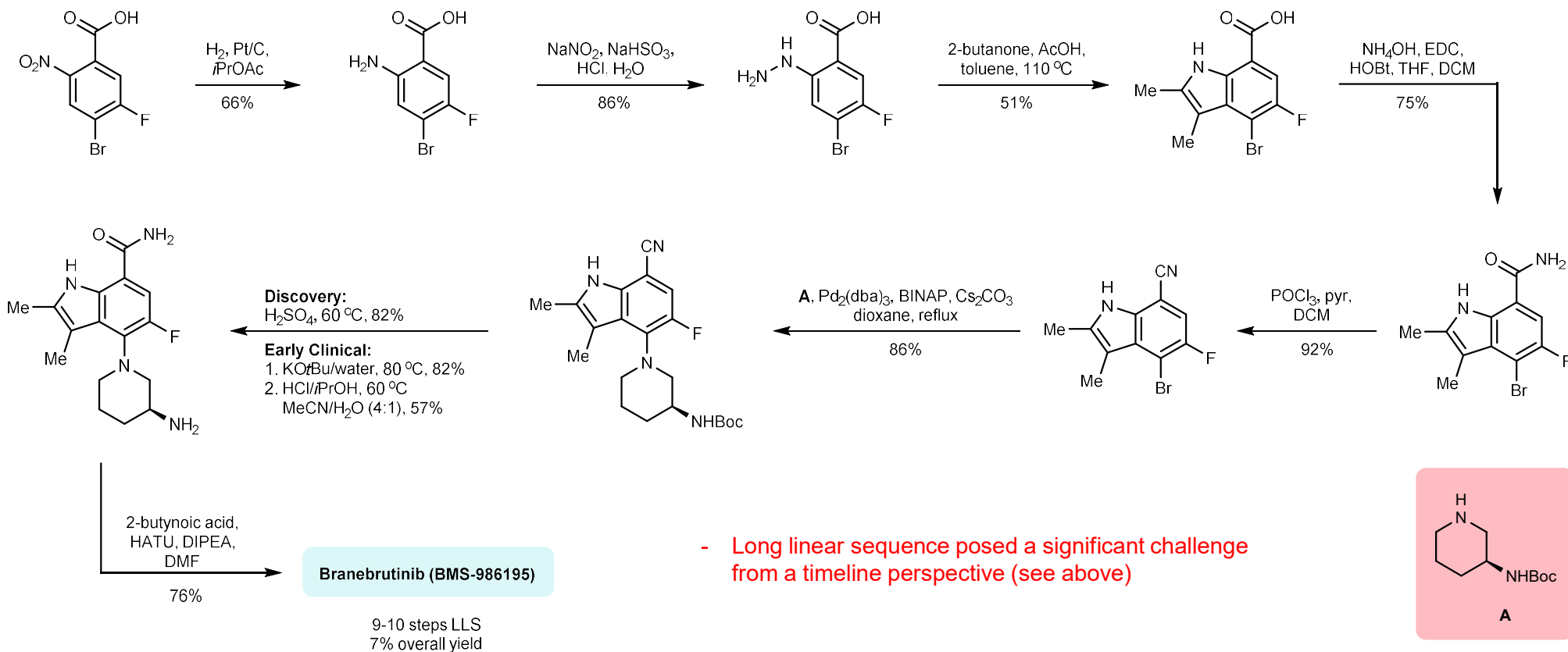


Branebrutinib (BMS-986195)

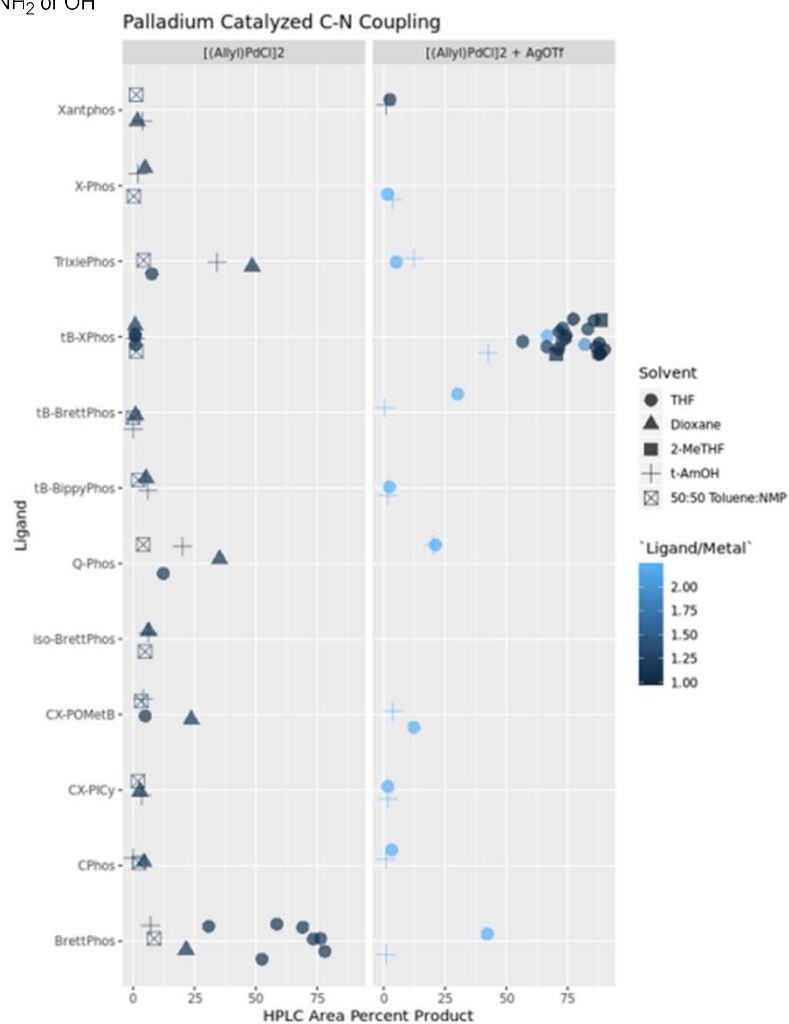
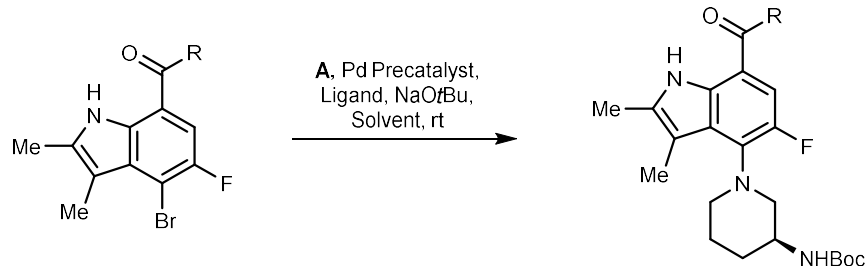


Figure 2. Strategy for commercial route development.

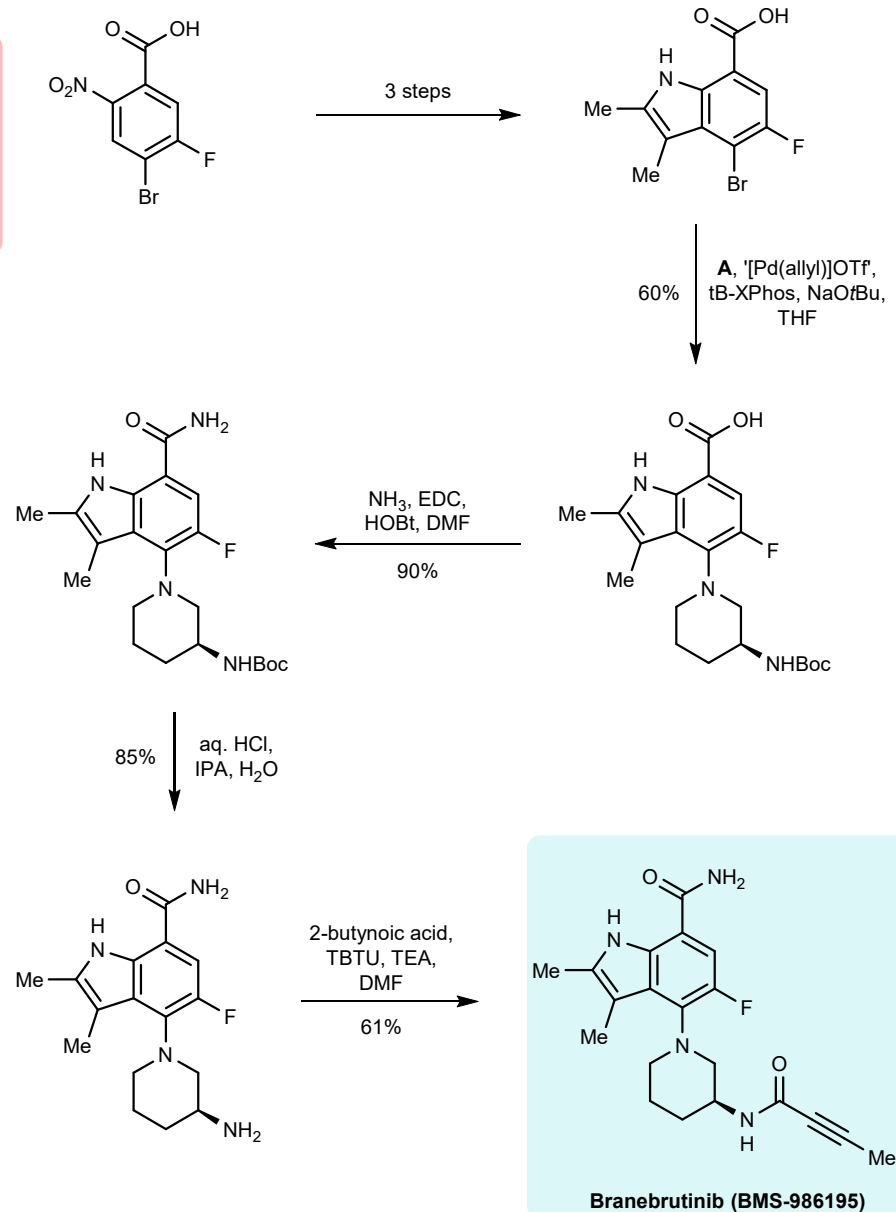
Discovery/Early Clinical Route:



Initial HTE towards a Shortened Route:



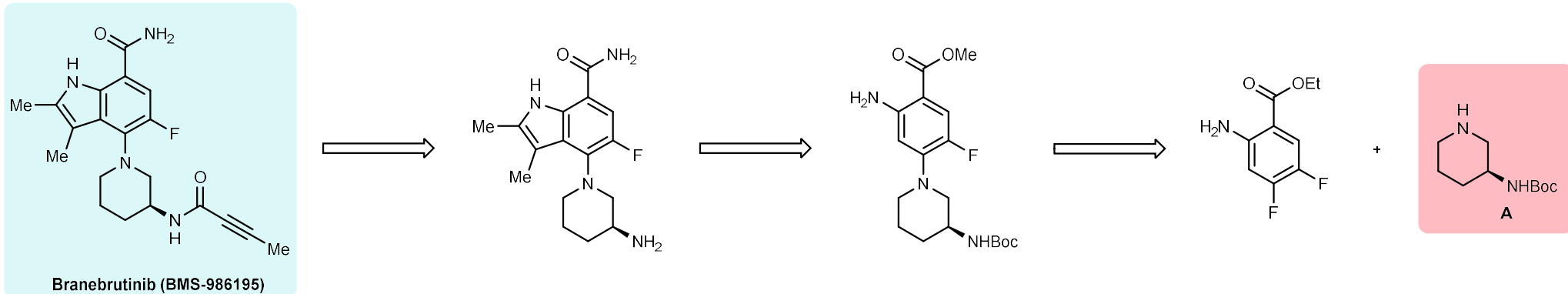
Shortened Route:



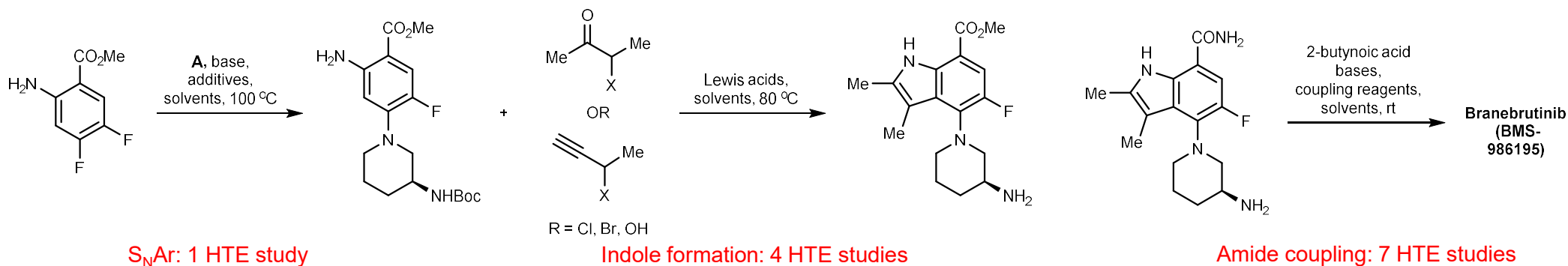
- Reduced overall step count
- 23% improvement in overall yield

7 steps LLS
30% overall yield

Retrosynthesis for New Route:



HTE Studies:



Commercial Route:

