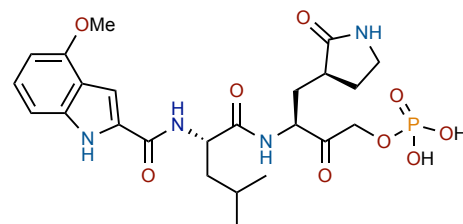
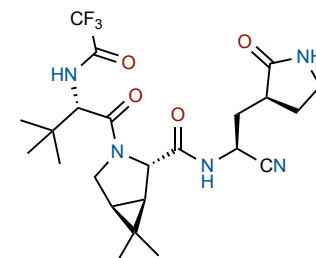


Background

- Soon after emergence of SARS-CoV-2 and the start of the pandemic, several approaches to treatment were advanced to clinical development
- One treatment strategy is targeting of the 3CL protease to selectively inhibit replication of the coronavirus
- Previous promising analog led to development of phosphate prodrug
- Development of process route expedited route towards Nirmatrelvir, a component of Paxlovid

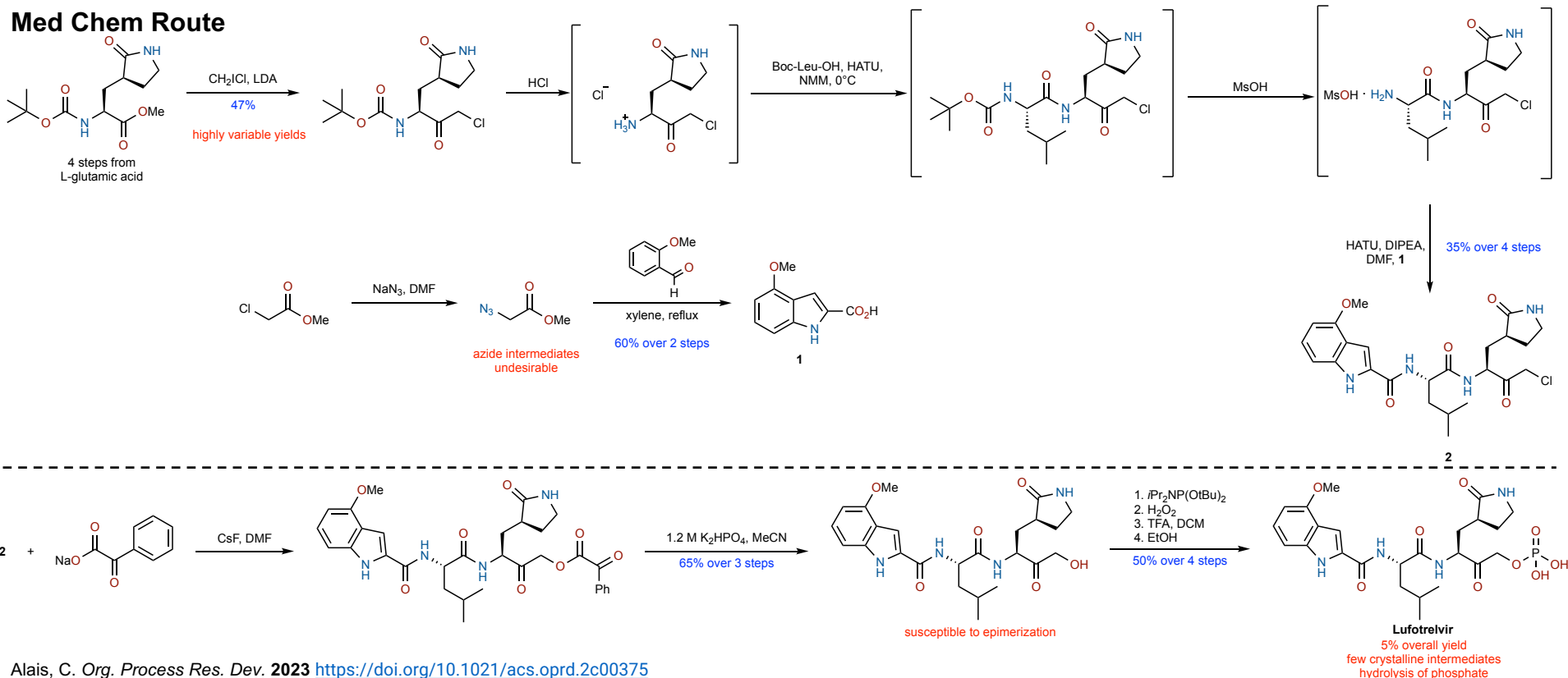


Lufotrelvir
3CL protease inhibitor



Nirmatrelvir
3CL protease inhibitor

Med Chem Route



Process Route

